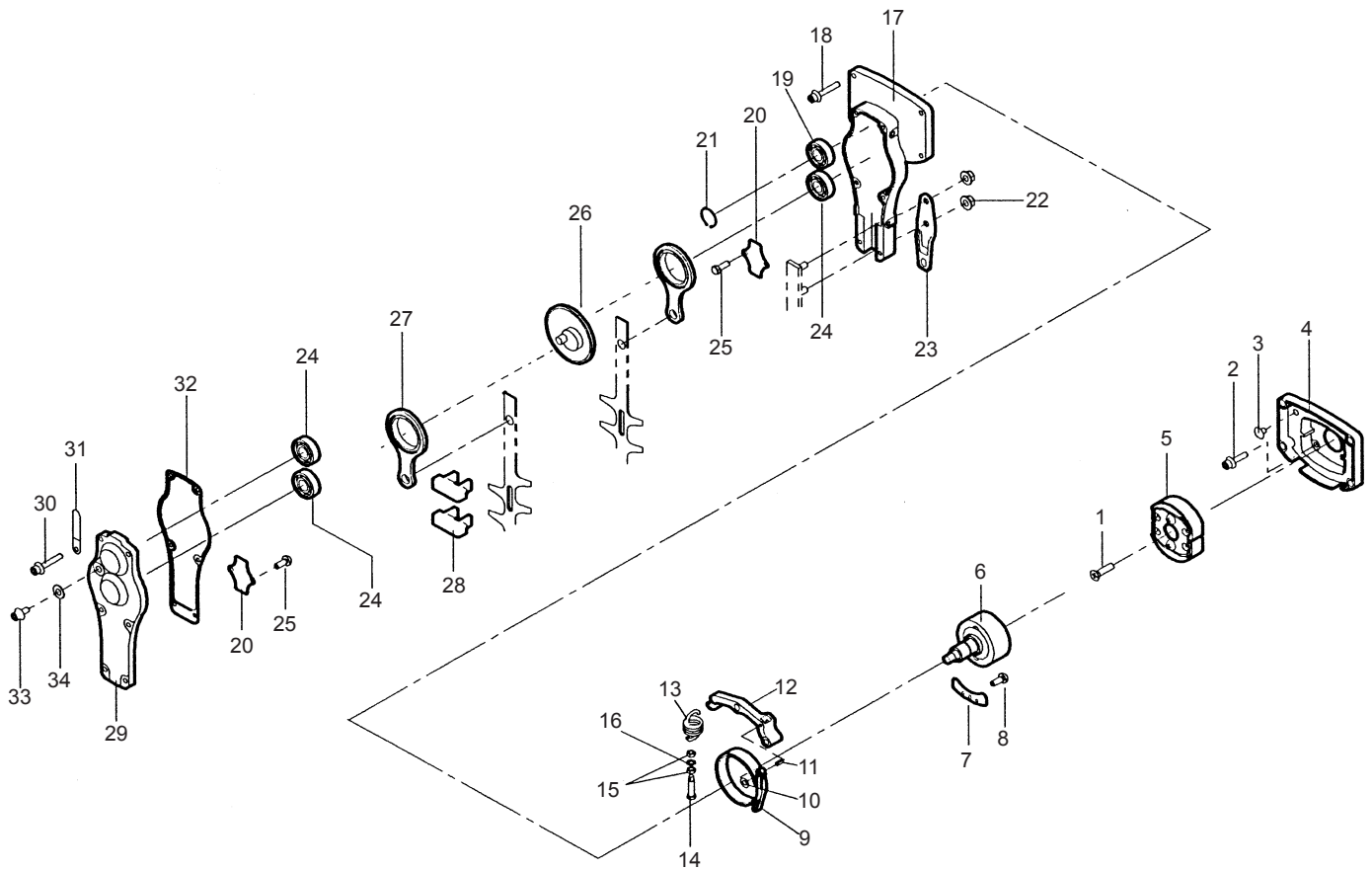


TM3200

GEAR CASE



PARTS LIST

REF. No.	PARTS No.		PARTS NAME	GEAR CASE				1/4	Jun, 2003	REMARKS
				Q'TY	NCLUD NG					
1	375L	0620	(+)FLAT SCREW	1					M6 × 20	
2	423U	0515	SOCKET SCREW FLANGE	4					M5 × 15	
3	91033	137	BLIND COVER	1						
4	51070	129	ENGINE BASE	1						
5	71019	118	CLUTCH SHOE ASS'Y	1						
6	11014	216	CLUTCH DRUM C.P.	1						
7	11050	169	FIXING PLATE	1						
8	423U	0408	SOCKET SCREW FLANGE	1					M4 × 8	
9	68053	103	BRAKE BAND	1						
10	612L	0400	PLAIN WASHER	1						
11	711V	0416	SPRING PIN	1					M4 × 16	
12	11104	158	ARM	1						
13	68013	324	SPRING	1						
14	31032	106	ADJUST SCREW	1						
15	31058	160	HEXAGON NUT	2						
16	611L	0600	PLAIN WASHER	1						
17	51068	106	CAM CASE	1						
18	423U	0518	SOCKET SCREW FLANGE	4					M5 × 18	
19	954B	6003	BEARING	1					6003 ZZ C3	
20	11050	168	FIXING PLATE	2						
21	812V	1700	C-SNAPRING FOR SHAFT	1					φ17	
22	571L	0600	HEXAGON NUT FLANGE	2						
23	11102	208	HOLDER	1						
24	954B	0629	BEARING	3					629 ZZ C3	
25	31062	152	LOCK COAT (+) SCREW	4					M4 × 8	