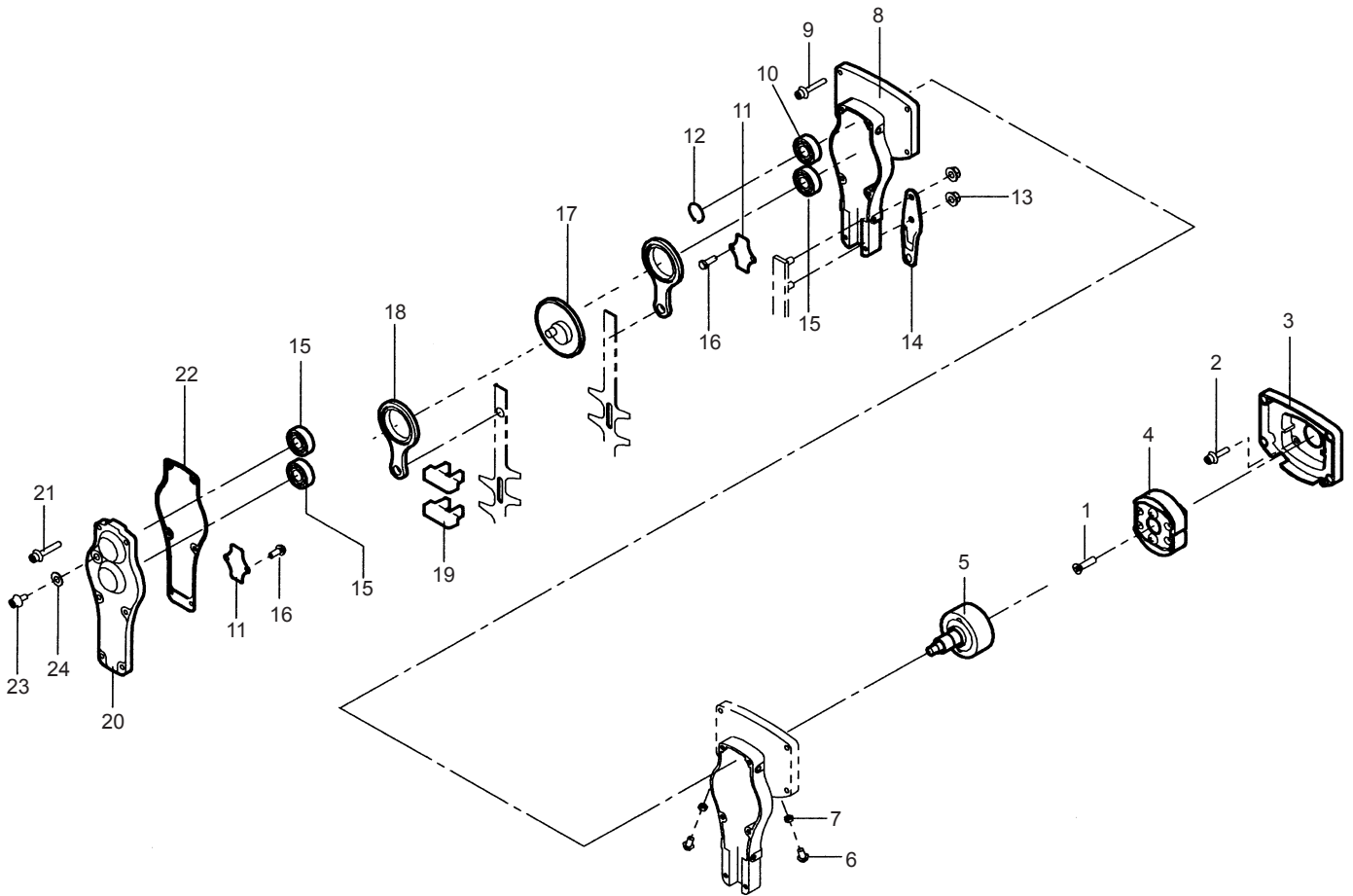


TM3100

GEAR CASE



PARTS LIST

| REF. No. | PARTS No. | | PARTS NAME | Q'TY | | | REMARKS |
|----------|-----------|------|----------------------|---------|--|--|------------|
| | | | | NCLUDNG | | | |
| 1 | 375L | 0620 | (+)FLAT SCREW | 1 | | | M6 × 20 |
| 2 | 423U | 0515 | SOCKET SCREW FLANGE | 4 | | | M5 × 15 |
| 3 | 51070 | 129 | ENGINE BASE | 1 | | | |
| 4 | 71019 | 118 | CLUTCH SHOE ASS'Y | 1 | | | |
| 5 | 11014 | 216 | CLUTCH DRUM C.P. | 1 | | | |
| 6 | 335L | 0508 | BOLT FLANGE | 2 | | | M5 × 8 |
| 7 | 513L | 0500 | HEXAGON NUT | 2 | | | M5 |
| 8 | 51068 | 106 | CAM CASE | 1 | | | |
| 9 | 423U | 0518 | SOCKET SCREW FLANGE | 4 | | | M5 × 18 |
| 10 | 954B | 6003 | BEARING | 1 | | | 6003 ZZ C3 |
| 11 | 11050 | 168 | FIXING PLATE | 2 | | | |
| 12 | 812V | 1700 | C-SNAPRING FOR SHAFT | 1 | | | Φ 17 |
| 13 | 571L | 0600 | HEXAGON NUT FLANGE | 2 | | | M6 |
| 14 | 11102 | 208 | HOLDER | 1 | | | |
| 15 | 954B | 0629 | BEARING | 3 | | | 629 ZZ C3 |
| 16 | 31062 | 152 | LOCK COAT (+) SCREW | 4 | | | M4 × 8 |
| 17 | 78004 | 256 | GEAR | 1 | | | |
| 18 | 11046 | 104 | CAM ROD C.P. | 2 | | | |
| 19 | 61010 | 111 | FELT PACKING | 2 | | | |
| 20 | 51069 | 104 | CAM CASE COVER | 1 | | | |
| 21 | 423U | 0515 | SOCKET SCREW FLANGE | 6 | | | M5 × 15 |
| 22 | 61019 | 214 | PACKING | 1 | | | |
| 23 | 427U | 0608 | SOCKET SCREW BUTTON | 1 | | | M6 × 8 |
| 24 | 611L | 0600 | PLAIN WASHER | 1 | | | M6 |