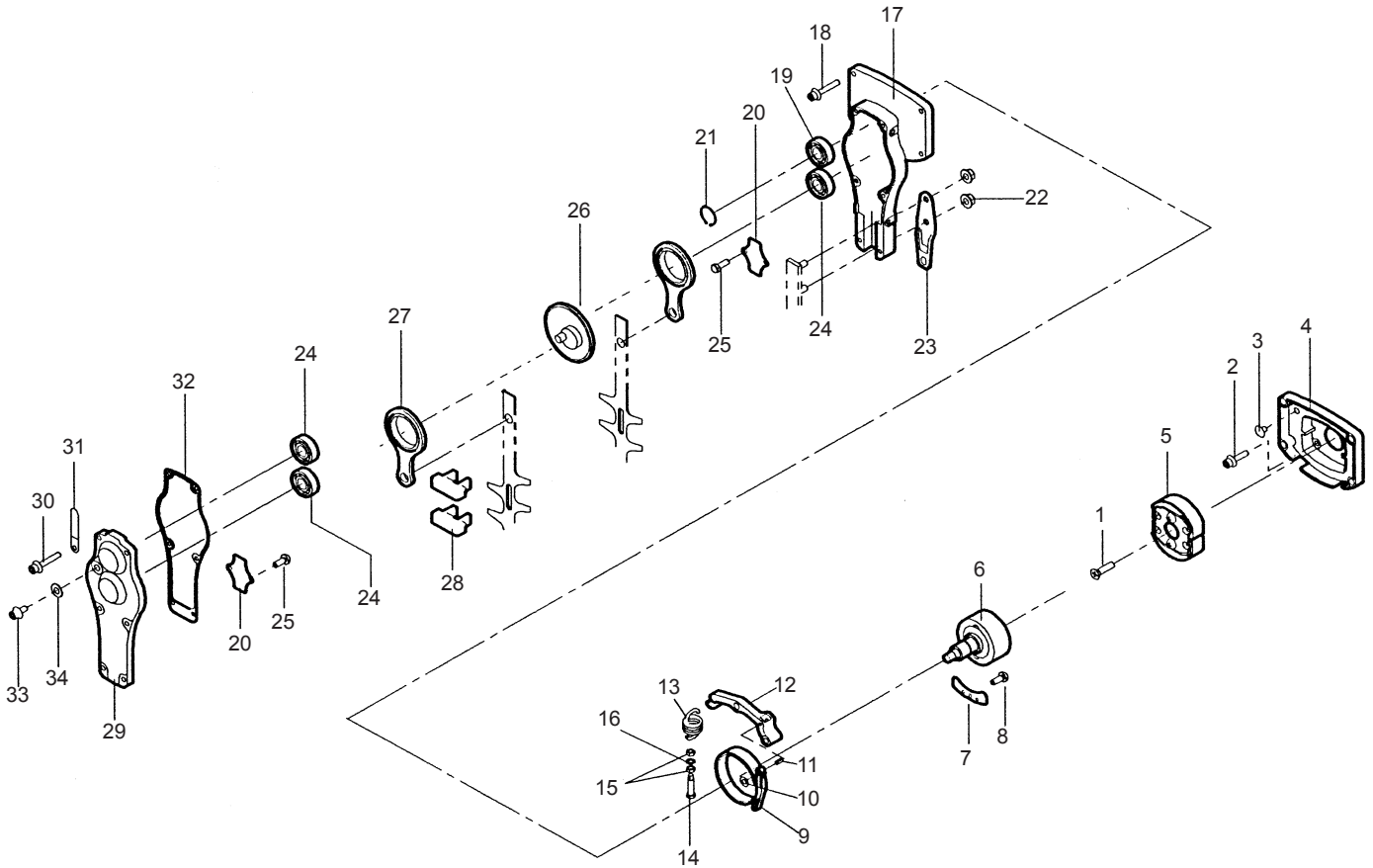


**TM2600**  
**GEAR CASE**



## PARTS LIST

REF. No.	PARTS No.	PARTS NAME	GEAR CASE				1/4	Jun, 2003	REMARKS
			Q'TY	NCLUD NG					
1	375L 0620	(+)FLAT SCREW	1					M6 × 20	
2	423U 0515	SOCKET SCREW FLANGE	4					M5 × 15	
3	91033 137	BLIND COVER	1						
4	51070 129	ENGINE BASE	1						
5	71019 118	CLUTCH SHOE ASS'Y	1						
6	11014 216	CLUTCH DRUM C.P.	1						
7	11050 169	FIXING PLATE	1						
8	423U 0408	SOCKET SCREW FLANGE	1					M4 × 8	
9	68053 103	BRAKE BAND	1						
10	612L 0400	PLAIN WASHER	1						
11	711V 0416	SPRING PIN	1					M4 × 16	
12	11104 158	ARM	1						
13	68013 324	SPRING	1						
14	31032 106	ADJUST SCREW	1						
15	31058 160	HEXAGON NUT	2						
16	611L 0600	PLAIN WASHER	1						
17	51068 106	CAM CASE	1						
18	423U 0518	SOCKET SCREW FLANGE	4					M5 × 18	
19	954B 6003	BEARING	1					6003 ZZ C3	
20	11050 168	FIXING PLATE	2						
21	812V 1700	C-SNAPRING FOR SHAFT	1					φ 17	
22	571L 0600	HEXAGON NUT FLANGE	2						
23	11102 208	HOLDER	1						
24	954B 0629	BEARING	3					629 ZZ C3	
25	31062 152	LOCK COAT (+) SCREW	4					M4 × 8	