

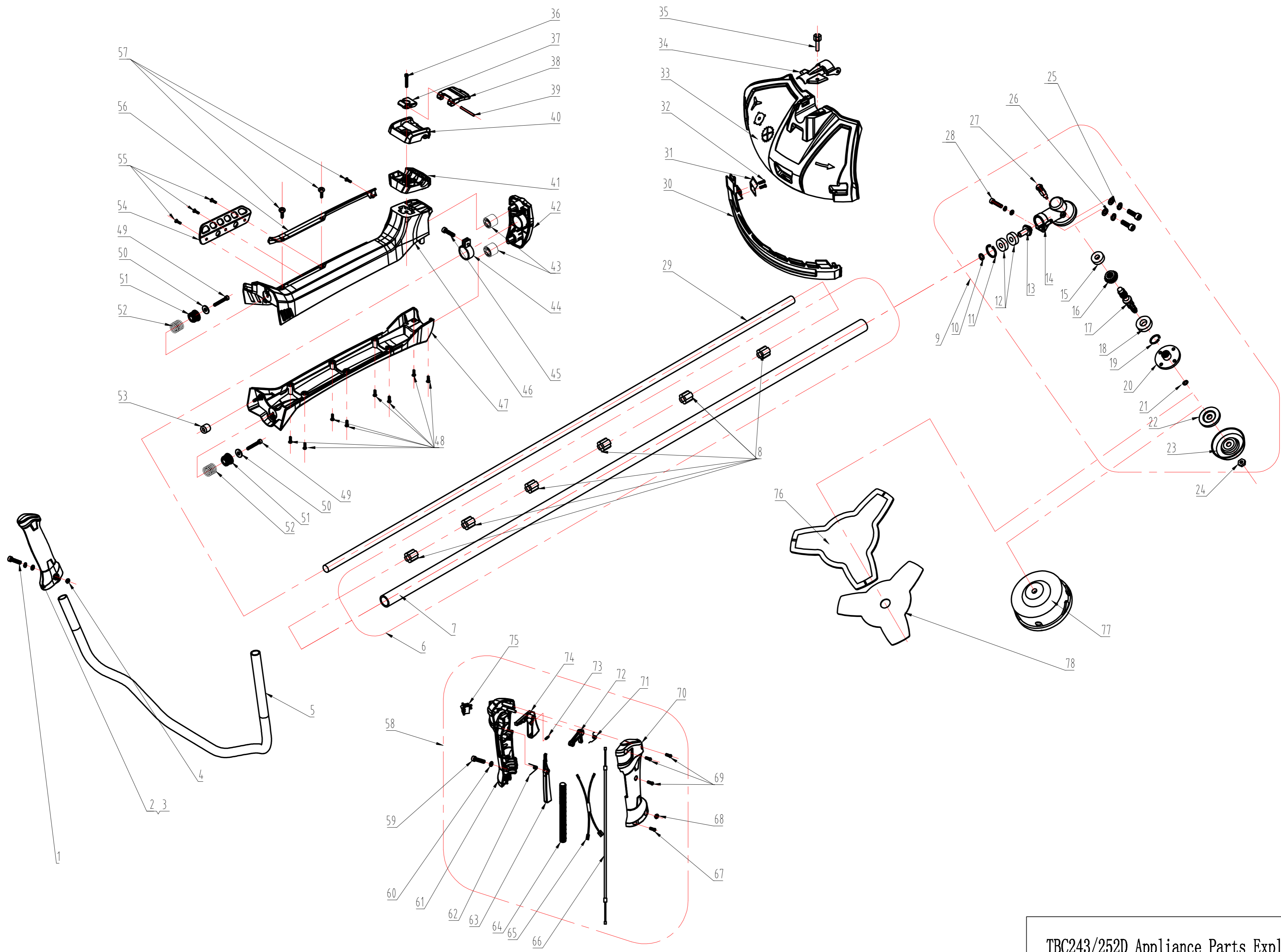
IE44F-5B Engine Parts Explore (For TBC252D)

1E44F-5B Engine Parts

NO.	DWG NO.	Part No.		description	Qty
1	GB/T2671.2		螺钉 M5x25	screw M5x25	2
2	GB/T2671.2		螺钉 M5x20	screw M5x20	2
3	GB/T93		弹簧垫圈5	lock washer 5	4
4	GB/T97.1		平垫圈5	plate washer 5	4
5	YD62.02.00-3		启动手柄	start grip	1
6	YD25.02.01-2		拉绳护套	eyelet	1
7	TBC430D.01.12.00-2		启动拉绳	start rope	1
8	TBC243D.01.12.00-01		启动器罩	start housing	1
9	YD36.07.01-4		启动盘簧	coil spring	1
10	TBC243D.01.12.00-4		盘簧盖	coil spring cover	1
11	TBC243D.01.12.00-00		启动器总成	start assembly	1
12	TBC243D.01.12.00-3		启动绳轮	start pulley	1
13	TBC243D.01.12.00-4		大盘簧	coil spring. Start	1
14	TBC243D.01.12.00-6		启动棘轮	ratchet wheel	1
15	GB/T9074.19		自攻螺钉ST4.8x19	ST screw 4.8x19	1
16	GB/T9074.19		平垫圈5x15x1	plate washer 5x16x1	1
17	GB/T6187		螺母 M8	nut M8	1
18	TBC430D.01.00.02-00		启动拨盘部件	start reel	1
19	GB/T97.1		平垫圈8	plate washer 8	1
20	YD38-3.01.01.02-00		小油封 12x22x7	OIL-SEAL 12x22x7	1
21	TBC243D.01.01.00-2		右箱体	crank case RH side	1
22	TBC430D.01.01.00-3		箱体密封垫	gasket \ Crank case	1
23	GB/T276		轴承6202	ball bearing 6202	2
24	TBC431D.01.03.01-00		曲轴连杆部件	crank shaft ass'y	1
25	GB/T1099		半圆键 3x5x13	key 3x5x13	1
26	TBC430D.01.03.03-00		滚针轴承φ10x13x16	bearing φ10x13x16	1
27	YD38-3.01.03.00-4		活塞销卡簧	circlip \ Piston ring	2
28	TBC520D.01.03.00-2		活塞销	piston pin	1
29	TBC520D.01.03.02-00		活塞	piston	1
30	TBC520D.01.03.00-1		活塞环	piston ring	2
31	TBC520D.01.00.00-2		汽缸密封垫	gasket \ Cylinder	1
32	TBC252D.01.00.00-1		汽缸	cylinder	1
33	GB/T2671.2		螺钉 M5x20	screw M5x20 \ Cylinder	4
34	GB/T93		弹簧垫圈5	lock washer 5	4
35	GB/T97.1		平垫圈5	plate washer 5	4
36	YD45.01.11.04-00		火花塞	Spark Plug	1
37	GB/T845		自攻螺钉ST4.2x10	ST screw 4.2x10	1
38	TBC243D.01.00.00-15		导风罩		1
39	TBC243D.01.00.00-11		汽缸罩	top housing	1
40	TBC243D.01.00.00-14		火花塞防护盖		1
41	GB/T845		自攻螺钉ST4.8x13	ST screw 4.8x13	1
42	TBC243D.01.11.02-00		熄火导线	wire	1
43	TBC243D.01.11.00-1		火花塞帽	Spark Plug cover	1
44	GB/T2671.2		螺钉M5x25	screw M5x25/ Ignition	2
45	GB/T93		弹簧垫圈5	lock washer 5	2
46	GB/T97.1		平垫圈5	plate washer 5	2
47	TBC243D.01.11.01-00		点火器	ignition	1
48	GB/T119.2		销 φ5×10	pin φ5×10	2
49	TBC430D.01.01.00-1		左箱体	crank case LH side	1
50	GB/T2671.2		螺钉M5x30	screw M5x30	4
51	GB/T93		弹簧垫圈5	lock washer 5	4
52	GB/T97.1		平垫圈5	plate washer 5	4
53	TBC430D.01.00.03-00		油封 15x30x7	OIL-SEAL 15x30x7	1
54	TBC521D.01.10.00-00		飞轮总成	magneto rotor	1

55	GB/T6187		法兰螺母 M8	flange nut M8	1
56	TBC430D.01.00.00-9		垫圈 8x16x1.5	plate washer 8x16x1.5	2
57	TBC430D.01.00.04-00		蹄块部件	clutch assemble	1
58	GB/T755		波型垫圈 10	washer 10	2
59	TBC430D.01.00.00-8		蹄块螺栓	bolt \ clutch	2
60	GB/T119.2		销 $\phi 5 \times 10$	pin $\phi 5 \times 10$	2
61	TBC430D.01.01.00-4		边盖	fan cover	1
62	GB/T2671.2		螺钉M5x25	screw M5x25	4
63	GB/T93		弹簧垫圈5	lock washer 5	4
64	GB/T97.1		平垫圈5	plate washer 5	4
65	TBC430D.01.14.01-00		被动盘部件	clutch drum	1
66	GB/T893.1		孔用弹性挡圈35	circlip 35	1
67	GB/T276		轴承6202-2z	ball bearing 6202-2z	1
68	GB/T894.1		轴用弹性挡圈15	circlip 15	1
69	TBC243D.01.14.00-1		输出座	clutch drum housing	1
70	GB/T2671.2		螺钉M5x16	screw M5x16	1
71	GB/T93		弹簧垫圈5	lock washer 5	1
72	GB/T97.1		平垫圈5	plate washer $\Phi 5$	1
73	GB/T2671.2		螺钉M6x20	screw M6x20	4
74	GB/T93		弹簧垫圈6	lock washer 6	4
75	GB/T97.1		平垫圈6	plate washer $\Phi 6$	4
76	TBC243D.01.14.00-3		输出座后减震套		1
77	TBC243D.01.14.00-4		输出座内管		1
78	TBC243D.01.14.00-2		输出座前减震套		1
79	TBC243D.01.14.00-5		小管固定片		1
80	GB/T893.1		孔用弹性挡圈45	circlip 45	1
81	GB/T2671.2		螺钉M5x16	screw M5x16	1
82	GB/T93		弹簧垫圈5	lock washer 5	1
83	GB/T97.1		平垫圈5	plate washer 5	1
84	GB/T2671.2		螺钉M6x12	screw M6x12	1
85	GB/T93		弹簧垫圈5	lock washer 5	1
86	GB/T97.1		平垫圈5	plate washer 5	1
87	GB/T2671.2		螺钉M6x25	screw M6x25	1
88	GB/T93		弹簧垫圈6	lock washer 6	1
89	GB/T97.1		平垫圈6	plate washer 6	1
90	GB/T2671.2		螺钉M6x55	screw M6x55	2
91	GB/T93		弹簧垫圈6	lock washer 6	2
92	GB/T97.1		平垫圈6	plate washer 6	2
93	TBC243D.01.00.00-7		消声器罩		1
94	GB/T2671.2		螺钉M5x12	screw M5x12	1
95	GB/T93		弹簧垫圈5	lock washer 5	1
96	GB/T97.1		平垫圈5	plate washer 5	1
97	TBC243D.01.09.00-00		消声器	muffler	1
98	TBC430D.01.00.00-5		消声器密封垫	gasket . Muffler	1
99	TBC430D.01.00.00-3		进气管密封垫	gasket	1
100	TBC431D.01.00.01-00		进气管	admitting pipe	1
101	TBC431D.01.00.00-12		油门线压板	stamping	1
102	GB/T845		自攻螺钉ST3.5x9.5	ST screw 3.5x9.5	1
103	GB/T2671.2		螺钉M5x25	screw M5x25	2
104	GB/T93		弹簧垫圈5	lock washer 5	2
105	GB/T97.1		平垫圈5	plate washer 5	2
106	YD38-3.01.00-8		化油器密封垫	gasket . carburetor	1
107	TBC431D.01.06.00-00		化油器	carburetor	1
108	TBC243D.01.08.00-00		空滤器	air box assembly	1
109	TBC243D.01.08.00-1		空滤器座	air box base	1
110	GB/T2671.2		螺钉M5x45	screw M5x45	2
111	GB/T93		弹簧垫圈5	lock washer 5	2
112	GB/T97.1		平垫圈5	plate washer 5	2
113	TBC243D.01.08.00-3		滤芯	spone	1

114	TBC243D.01.08.00-2		空滤器罩	air box cover	1
115	TBC243D.01.08.00-4		空滤锁母		
116	TBC431D.01.13.01-1		油箱盖	fuel tank cover	1
117	TBC431D.01.13.01-3		密封垫圈	rubber	1
118	TBC431D.01.13.01-2		防掉板		1
119	TBC243D.01.13.00-1		油箱	fuel tank	1
120	TBC431D.01.13.00-2		橡胶衬圈	rubber bump	4
121	TBC243D.01.00.00-10		底座	bottom housing	1
122	GB/T2671.2		螺钉M5x25	screw M5x25 fuel tank	4
123	GB/T93		弹簧垫圈5	lock washer 5	4
124	GB/T97.1		平垫圈5	plate washer 5	4
125	YD45.03.00-5		平衡器体		1
126	TBC431D.01.13.00-6		通气管	air tube	1
127	TBC431D.01.13.00-4		燃油管	fuel tube	1
128	TBC431D.01.13.00-5		回油管	fuel tube	1
129	TBC431D.01.13.00-3		燃油管座	retainer . fuel tube	1
130	YD45.01.01.01-3		油管卡簧		1
131	YD38-3.03.04-00		汽油滤体部件	filter fuel	1
132	TBC243D.01.00.00-13		装饰板		1



TBC243/252D Appliance Parts Explore

TBC243 250D Appliance Parts

Ser. NO.			名 称	Description	Qty
1	GB/T2671.2	GB/T2671.2	内六角花型圆柱头组合螺钉M5	screw M5x45	1
2	TBC243D.05.02-1	C43.2111.0201	左手柄	left handle	1
3	TBC243D.05.02-2	C43.2111.0202	左手柄固定座	left handle clamp	1
4	GB/T6170	GB/T6170	螺母M5	nut M5	1
5	TBC243D.05.00-1	C43.2111.0001	操作杆 (US)	AL tubing	1
6	TBC243D.03.00-00	C43.2112.0000	传动总成	straight shaft assembly	1
7	TBC243D.03.00-1	C43.2112.0001	铝管(28)	AL tubing	1
8	TBC430D.03.04-00A	C43.1112.0300	橡胶套部件(28)	rubber	6
9		C52.2116.0000	自锁齿轮箱28	gear box assembly	1
10	GB/T894.1	GB/T894.1	轴用弹性挡圈10	circlip 10	1
11	GB/T893.1	GB/T893.1	孔用弹性挡圈26	circlip 26	1
12	GB/T276	GB/T276	轴承6000-2z D级 10x26x8	ball bearing 6000-2z	2
13	TBC431D.04.00-2	C43.0116.0002	主动锥齿轮	pinion	1
14		C52.2116.0001	齿轮箱(28)	gear box	1
15	GB/T276	GB/T276	轴承6000-2z D级 10x26x8	bearing 6000-2z 10x26x8	1
16	TBC431D.04.00-4	C43.0116.0004	被动锥齿轮	gear	1
17		C52.2116.0002	花键轴	gear shaft	1
18	GB/T276	GB/T276	轴承6202-2z D级 12x32x9	ball bearing 6202-2z	1
19	GB/T893.1	GB/T893.1	孔用弹性挡圈26	circlip 26	1
20		C52.2116.0003	刀片下压板	blade retainer	1
21	GB/T894.1	GB/T894.1	轴用弹性挡圈12	circlip 12	1
22	TBC431D.04.00-5	C43.1116.0003	刀片上压板	cap washer	1
23	TBC431D.04.00-8	C43.1116.0005	下保护盖	bottom guard	1
24	GB/T6177.2	GB/T6177.2	法兰螺母M10x1.25左旋	flange nut M10x1.25 left	1
25	GB/T2671.2	GB/T2671.2	内六角花型圆柱头组合螺钉M6x12	screw M6x12	1
26	GB/T2671.2	GB/T2671.2	内六角花型圆柱头组合螺钉M6x12	screw M6x12	1
27	GB/T2671.2	GB/T2671.2	内六角花型圆柱头组合螺钉M6x25	screw M6x25	1
28		C52.2116.0100	自锁插销	self-lock bolt	1
29	TBC430D.03.00-1	C43.0112.0001	传动轴	driver shaft	1
30	TBC243D.06.01-1	C43.2113.0308	防护罩边条	Strake of protective cover	1
31	TBC243D.06.00-2	C43.2113.0306	切割块	cutting blade	1
32	GB/T845	GB/T845	自攻螺钉ST4.2x13	ST screw 4.2x13	2
33	TBC243D.06.02-00	C43.2113.0302	防护罩	guard	1
34		C48.B113.0001	连接压板	clamp \ guard	1
35	TBC243D.06.00-3	C43.2113.0307	锁紧螺栓	lock screw	1
36	TBC243D.05.04-7	C43.2111.0406	固定座锁紧螺钉	locking screw of fixed base	1
37	TBC243D.05.04-4	C43.2111.0404	锁紧压块	Lock press block	1
38	TBC243D.05.04-3	C43.2111.0403	锁紧手柄	Lock press handle	1
39	TBC243D.05.04-6	C43.2111.0405	转轴	rotating shaft	1
40	TBC243D.05.04-1	C43.2111.0401	手柄固定座上盖	upper clamp	1
41	TBC243D.05.04-2	C43.2111.0402	手柄固定座下盖	lower clamp	1
42	TBC243D.05.03-4	C43.2111.0304	减震支撑座	Damping supporting seat	1
43	TBC243D.05.03-7	C43.2111.0307	前减震套	Front shock absorption sleeve	2
44	TBC243D.05.03-10	C43.2111.0310	锁紧箍	locking hoop	1
45	GB/T2671.2	GB/T2671.2	内六角圆柱头螺钉M5x16	screw M5x16	1
46	TBC243D.05.03-1	C43.2111.0301	上护罩	upper cover	1

47	TBC243D.05.03-2	C43.2111.0302	下护罩	lower cover	1
48	GB/T845	GB/T845	自攻螺钉ST4.8x14	ST screw 4.8x14	8
49	GB/T845	GB/T845	自攻螺钉ST4.8x16	ST screw 4.8x16	2
50	GB/T96	GB/T96	大平垫圈5	plate 5	2
51	TBC243D.05.03-8	C43.2111.0308	后减震套	Rear shock absorption sleeve	2
52	TBC243D.05.03-6	C43.2111.0306	减震弹簧	Shock absorber spring	2
53	TBC243D.05.03-9	C43.2111.0309	减震块	Damping block	1
54	TBC243D.05.03-5	C43.2111.0305	挂板	Hanging board	1
55	GB/T845	GB/T845	自攻螺钉ST4.8x14	ST screw 4.8x14	3
56	TBC243D.05.03-3	C43.2111.0303	压线盖	Cap	1
57	GB/T845	GB/T845	自攻螺钉ST4.8x13	ST screw 4.8x13	3
58	TBC243D.05.01-00	C43.2111.0100	右手柄部件	control handle assembly	1
59	GB/T2671.2	GB/T2671.2	内六角圆柱头螺钉M5x35	screw M5x35	1
60	GB/T97.1	GB/T97.1	平垫圈φ5	plate 5	1
61	TBC243D.05.01-2	C43.2111.0100	右手柄左盖	plastic handle \ LH	1
62	TBC243D.05.01-7	C43.2111.0107	扳机回位扭簧	spring \ trigger	1
63	TBC243D.05.01-6	C43.2111.0106	扳机控制臂	lock trigger	1
64	TBC243D.05.01-8	C43.2111.0601	导线套管	wire tube	1
65	TBC243D.05.06-00	C43.2111.0602	熄火线A	wire cable A	1
	TBC243D.05.07-00	C43.2111.0603	熄火线B	wire cable B	1
66	TBC243D.05.05-00	C43.2111.0500	油门线	throttl cable assembly	1
67	GB/T845	GB/T845	自攻螺钉ST3.5x9.5	ST screw 3.5x9.5	1
68	GB/T6170	GB/T6170	螺母M5	nut M5	1
69	GB/T845	GB/T845	自攻螺钉ST4×16	ST screw 4x16	3
70	TBC243D.05.01-1	C43.2111.0101	右手柄右盖	plastic handle \ RH	1
71	TBC243D.05.01-5	C43.2111.0105	扳机扭簧	spring \ trigger	1
72	TBC243D.05.01-4	C43.2111.0104	调整拉杆	Adjusting rod	1
73	TBC243D.05.01-9	C43.2111.0108	调整螺钉	Adjusting screw	1
74	TBC243D.05.01-3	C43.2111.0103	扳机	trigger	1
75	YD38-3.01.11.04-00	YD38-3.01.11.04-00	熄火开关	switch	1
76	TBC431D.02.00-5	C43.1100.0005	刀片护套	blade cover	1
77	TBC430D.02.01-00	C43.0100.0100	打草头部件	string head assembly	1
78	TBC430D.02.00-1	C43.0100.0001	三齿刀片A	blade	1